

A.LEDA B-EYE Series

Versatile and spectacular

The new Clay Paky A.leda B-EYE caused a sensation in the industry when it was officially launched at Plasa 2013. After only a few hours, the social networks were flooded with videos and enthusiastic comments about the new arrival. Just few months later, the B-EYE had already won the three most prestigious innovation awards of the industry, at Plasa, at LDI and at ProLight+Sound.

prolight+sound
international
press award

pipa 2014

LDI
2013
**BEST DEBUTING
LIGHTING PRODUCT**

WINNER OF THE 2013
plasalondon
AWARDS FOR INNOVATION



I'm absolutely blown away with B-EYE. It's a good one!
Marck Brickman, Lighting Designer



*It's the B-EYE. It's the B-est... I love it!
Just saw it for the first time and it really rocks.
Though I'm not a minimalist, I can go down to one LED
and it would kick ass. Great light!*
Peter Morse, Lighting Designer



*We have another new fixture from Clay Paky that has given us
a whole new world of illusion to project.*
Steve Gray, Lighting Designer

B-EYE is now a comprehensive product line including: **B-EYE K20**, **B-EYE K10**,
B-EYE K10 Easy and **B-EYE K10 CC**.

B-EYE™
www.b-eye.it



A.leda B-EYE K20



A.leda B-EYE K10



A.leda B-EYE K10 EASY



A.leda B-EYE K10 CC

A.LEDA B-EYE Series

Versatile and spectacular



A.LEDA B-EYE K20

The A.leda B-EYE K20 is a high performance **wash light**, a breathtaking **beam light**, and a creator of completely new spectacular **visual effects**. Its unparalleled versatility makes it an extremely interesting creative tool for all lighting designers.

The B-EYE is first and foremost an excellent quality wash light. It is able to wash surfaces with colors at any distance, making the most of its light source. The B-EYE is at least **20% brighter** than any LED-wash with the same rated power, thanks to its special optical unit with a truly amazing lumen/watt ratio, designed and built by Clay Paky. The zoom ranges **from 4° to 60°** and it is therefore suitable both for environments with low ceilings (small theatres and TV studios, for example), where large angles are extremely useful, and for shows in arenas or large environments, where a tight zoom is perfect.

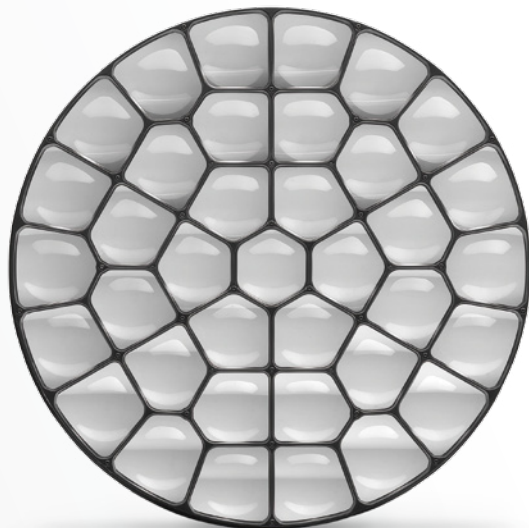
Thanks to its special optical group, B-EYE projects its light in a **perfectly uniform** way over the entire illuminated surface and the light is distributed evenly over its front lens; the individual light sources can no longer be distinguished along with their distinct colors.

In addition B-EYE is equipped with an **unparalleled electronic color control engine**. The fixture is based on **RGBW LEDs** and, thanks to the addition of the white chip, it covers a very wide spectrum of color frequencies and the saturated colors generated by the R-G-B chip may be softened. The B-EYE is also pleasantly surprising when used as a “white” light, as color temperature may be adjusted with accuracy from 8,000 K to 2,500 K. In addition, a special software algorithm allows the LEDs to simulate the behaviour of a tungsten lamp.

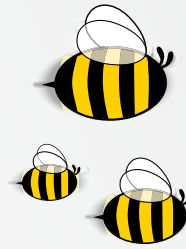
When the B-EYE beam is zoomed down to 4°, the “wash” light turns into a “beam” fixture. The B-EYE therefore becomes a surprising **mid-air parallel effect light**, capable of generating a pulsating beam of micro-rays, which may be controlled individually, each with its own colors and shades. All the parameters of each LED can be completely controlled.

Lastly, the B-EYE introduces a completely new feature: **the front lens may be rotated** to create lots of small bright compositions, which may be opened and closed like petals. By adding colors and dynamic graphics, the B-EYE generates never-seen-before graphic light effects.

The first is the “**vortex**”, an effect that fills the atmosphere with countless dynamic rays and creates an amazing experience. The second consists of “**kaleidoscopic**” projections, which materialize on the surrounding surfaces. Both of these effects may take on virtually endless forms and may be programmed and replicated with digital precision, since they are generated using state-of-the-art electronic technology.



The lenses of B-EYE (patent pending) are designed and specially made by Clay Paky: seven different kinds of pentagonal/hexagonal lens, to be arranged in order to minimize the gap between one lens and the others (resulting in additional light output).



B•EYE™
www.b-eye.it



A.LEDA B-EYE K10

The B-EYE K10 version with rotating front lens made its world debut at ProLight+Sound 2014. By popular demand, Clay Paky has decided to add this important feature, which was previously only available on the K20 version.

The **K10 and K20 luminaires** therefore provide identical features: **same optics, same color engine, same visual and "beam" effects**. Only the light output changes, since the B-EYE K10 is fitted with 19 LEDs, while the B-EYE K20 has 37. Both versions excel for their light output, higher than other LED fixtures of same power category.

Thanks to its light weight (**only 15 kg**), its small size and silent operation the B-EYE K10 is a very interesting luminaire for a variety of professional applications. It is particularly suitable for studio and theatre productions, where its unmatched versatility may be exploited.



A.LEDA B-EYE K10 Easy

The B-EYE K10 version without front-lens rotation, which Clay Paky launched at Plasa 2013, has not been discontinued but it has been renamed the B-EYE "easy", owing to its simplified features. This luminaire is highly suitable for all uses where special visual effects are not needed. As a washlight this version is identical to the full-feature B-EYE; it offers also **individual LED control**, since this is essential for creating unique aerial effects in the beam mode. Versatility, light-weight, compact size, high output and outstanding **performance/cost ratio** make B-EYE "easy" a very valuable alternative.



A.LEDA B-EYE K10 CC

For those many professional users who wish to use the superior optical characteristics of B-EYE technology exclusively in the wash mode and do not need the mid-air and graphic effects, Clay Paky has created a simpler version, called the A.leda B-EYE K10 CC (Color Changer). Unlike the full version, this fixture does not provide control of each pixel and does not have a rotating front lens.

The A.leda B-EYE K10 CC is therefore an extraordinarily **bright LED-wash**, with a perfectly uniform light field, a really wide zoom (from 4 to 60 degrees), and **complete color and white light management**. B-EYE K10 CC is an indispensable tool in every show, where it makes the utmost in modern color wash technology. It is perfect for TV studios, theatres, tours, corporate events, show-rooms and theme parks.



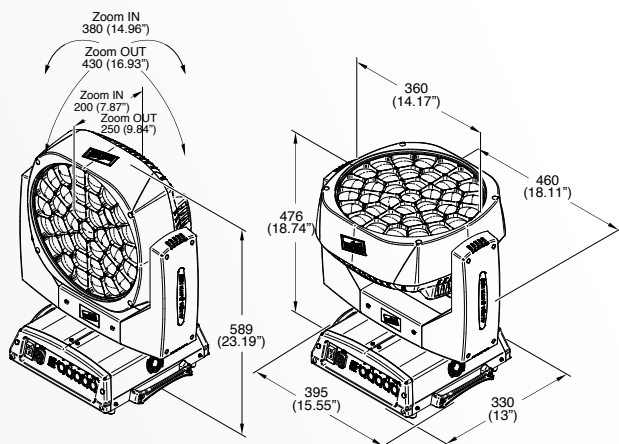
Special rods (miniature pipes with reflective inner walls) convey the light output of each LED from the source to the lens; internal light dissipation is eliminated, colors are mixed and homogenized and the light output is enhanced.

April 2014
Subject to change without notification

WEIGHT AND DIMENSIONS (mm/inches)

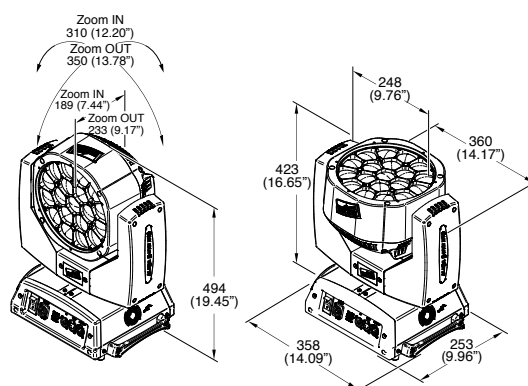
B-EYE K20

21 kg (46.3 lbs)



B-EYE K10

15 kg (33.1 lbs)



	K20					K10							K5
	B-EYE	WASH	WASH "CC" (Color Changer)	WASH "TW" (Tunable White)	WASH "W" (White)	B-EYE	B-EYE "Easy"	B-EYE "CC" (Color Changer)	WASH	WASH "CC" (Color Changer)	WASH "TW" (Tunable White)	WASH "W" (White)	WASH
Code	C61420	C61410	C61413	C61411	C61412	C61419	C61415	C61418	C61405	C61408	C61406	C61407	C61401
Source Type	RGBW	RGBW	RGBW	White 2700 and 8000 K	White 7000 K	RGBW	RGBW	RGBW	RGBW	RGBW	White 2700 and 8000 K	White 7000 K	RGBW
LED Nominal Wattage	15W	15W	15W	15W	15W	15W	15W	15W	15W	15W	15W	15W	15W
Number of LEDs	37	37	37	37	37	19	19	19	19	19	19	19	7
Enhanced Light Output	•					•	•	•					
Individual LED Control	•	•				•	•		•				•
Washlight Mode	•	•	•	•	•	•	•	•	•	•	•	•	•
Beamlight Mode	•					•	•						
Kaleido / Vortex Effect	•					•							
Zoom Range (@ 10% peak)	7° - 60°	16° - 68°	16° - 68°	16° - 68°	16° - 68°	7° - 60°	7° - 60°	7° - 60°	16° - 68°	16° - 68°	16° - 68°	16° - 68°	13° (fixed)
Zoom Range (@ 50% peak)	4° - 40°	9° - 43°	9° - 43°	9° - 43°	9° - 43°	4° - 40°	4° - 40°	4° - 40°	9° - 43°	9° - 43°	9° - 43°	9° - 43°	7° (fixed)
Unnoticeable Sources and Front Frame	•					•	•	•					
Front Lens bi-directional Rotation	•					•							
Digital Beam Shaper (in Wash Mode)	•					•							
Beam Edge Softening Control (in Wash Mode)	•					•							
Pixel Patterning Macros with Enhanced Control	•	•				•	•	•	•	•			•
White CT Emulation 2500 - 8000 K	•	•	•			•	•	•	•	•			•
White CT Emulation 2900 - 7500 K				•							•		
RGB auto-tuning to Lamp CT Emulation	•	•	•			•	•	•	•	•			•
Tungsten Lamp Emulation	•	•	•	•		•	•	•	•	•	•		•
High CRI (> 94)				•							•		

April 2014 - Subject to change without notification