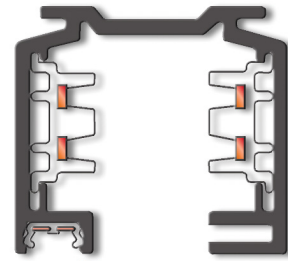
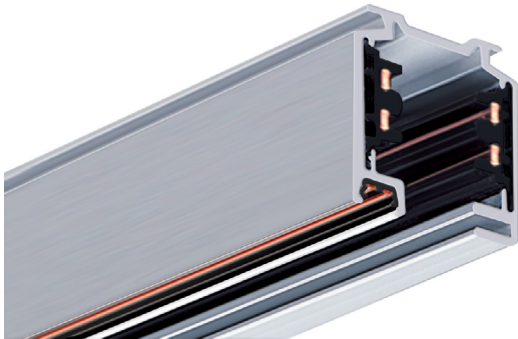


Track Lighting Series



DATATRACK

GENERAL INFORMATION

Quality fixtures deserve a quality track. ETC's DataTrack is a professional-grade track system that offers two separate circuits that can each be either switched or dimmed, with a built-in data bus for DMX/RDM or DALI lighting control. Hybrid systems using both conventional and LED fixtures are no problem for DataTrack.

When fully supported, DataTrack's sturdy construction can hold up to 22 pounds per foot. Add to that the many adapters, feeds, end caps, and hanging apparatus options, and DataTrack becomes the perfect solution for any installation.

APPLICATIONS

- Museums
- Retail
- Restaurants
- Lobbies
- Ballrooms

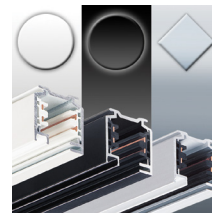
FEATURES

- DMX/RDM built in
 - Up to 32 DMX devices per data run
 - Up to 20 RDM devices per data run
- Two-circuit track with separate neutrals
- Track can easily be cut in the field for on site adjustments
- Rugged design can hold up to 22lb per foot when fully supported
- Large array of couplers to allow for any installation
- Available in black, white and silver
- Two-year warranty

REGULATORY AND COMPLIANCE

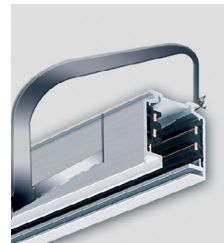
- UL and cUL Listed
- CE Compliant

STANDARD COLORS



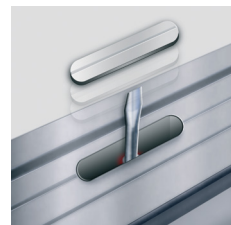
Available in black, white and silver to meet any design.

FIELD ADJUSTABLE LENGTHS



Available in four-, eight- and 12-foot lengths. Can be cut in the field as needed.

MOUNTING OPTIONS



Multiple mounting options, including easy knockouts for surface mounting.



Track Lighting Series

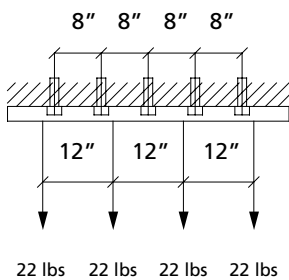
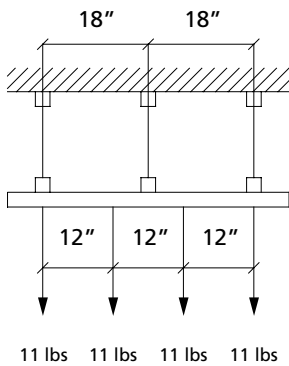
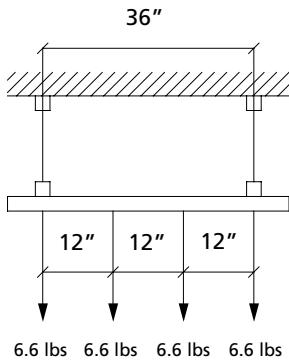
DataTrack Model and Part Numbers

DESCRIPTION	P/N (BLACK)	-1 (WHITE)	-5 (SILVER)
Two-circuit DataTrack			
Surface-mount track with data bus, 4ft	7066A1001	•	•
Surface-mount track with data bus, 8ft	7066A1002	•	•
Surface-mount track with data bus, 12ft	7066A1003	•	•
DataTrack Feeds and Connectors			
Live end-feed, ground contact right	7066A1110	•	•
Live end-feed, ground contact left	7066A1111	•	•
Mid-feed	7066A1012	•	•
Electrical straight coupler (includes 4" pendant clip for support)	7066A1013	•	•
I-coupler	7066A1114	•	•
Flex coupler	7066A1115	•	•
L-coupler, ground contact inside	7066A1116	•	•
L-coupler, ground contact outside	7066A1117	•	•
T-coupler, ground contact inside right	7066A1118	•	•
T-coupler, ground contact inside left	7066A1119	•	•
T-coupler, ground contact outside right	7066A1120	•	•
T-coupler, ground contact outside left	7066A1121	•	•
X-coupler	7066A1122	•	•
End cap	7066A1023	•	•
Feed canopy cover	7066A1128	•	•
Mid-feed canopy cover	7066A1026	•	•
Universal adapter	7066A1025	•	
DMX terminator	7066A1030	•	•
DataTrack Suspension			
2in pendant clip	7066A1040	•	•
4in pendant clip	7066A1041	•	•
5in support / feed canopy kit (includes 4' length of 1/16" wire rope)	7066A1042	•	
5in support canopy kit (includes 4' length of 1/16" wire rope)	7066A1043	•	
T-bar mounting clip	7066A1027; no finish color		
Threaded rod support kit	7066A1045-1; white only		
DataTrack Current-Limiters			
Current limiter, end feed, ground right	7066A1080	•	•
Current limiter, end feed, ground left	7066A1081	•	•
Current limiter, I-coupler	7066A1082	•	•
California Title 24 compliant - Current limiter, end feed, ground right	7066A1087	•	•
California Title 24 compliant - Current limiter, end feed, ground left	7066A1088	•	•
California Title 24 compliant - Current limiter, I-coupler	7066A1089	•	•
Current-limiting circuit breaker, single-pole, 3A	7066A1083	•	
Current-limiting circuit breaker, single-pole, 5A	7066A1084	•	
Current-limiting circuit breaker, single-pole, 8A	7066A1085	•	
Current-limiting circuit breaker, single-pole, 12A	7066A1086	•	

Note: Current-limiting breakers do not support inrush current over their rated capacity. The above current limiters are not recommended for use with high-inrush luminaires such as the Desire D22.

Track Lighting Product Series

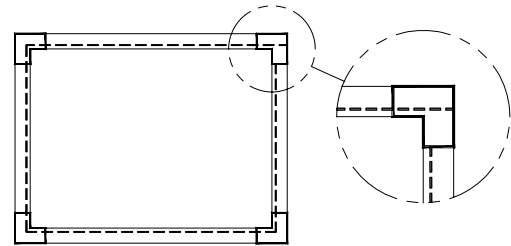
LOAD CAPACITY



DataTrack is for overhead surface mounting or pendant mounting with threaded rod or wire rope. For recessed mount options contact ETC

For detailed information on installation and layout of DataTrack systems, including track and accessory dimensions, data bus routing for complex configurations, basic troubleshooting and more, please refer to the [DataTrack System Planning and Installation Guide](#)

DATA



When mounting your DataTrack with data bus, please ensure that no loops within the data line are created. Failure to do so may result in unreliable data transmission.

If DataTrack L- or T- couplers are required in your system, the data-line connection in the respective coupler may be disconnected to avoid loops.

GROUND PATH PLANNING

